



FIELD apartments are a project in Kolašin, under the Bjelasica mountain. It is located an hour drive from the capital Podgorica and the largest airport in the country. Kolašin is the largest winter tourism center in Montenegro, with 43 km of ski slopes and one of the fastest growing tourist destinations.

The location of the complex is 2 km from the center of Kolašin and 9 km from the ski center "Kolašin 1450/1600-Bjelasica". This location is a special advantage for clients and visitors, as it is close to the city facilities and the ski center, and thus can meet all the needs of its residents in the winter and summer months.

The apartments have been designed according to the latest trends in architecture, making them a perfect combination of functionality, design and high standards. Each apartment has been carefully designed to meet the highest standards of quality of life, with great attention to detail and functionality of space. The apartments face south and have large open spaces that let in plenty of natural light. All apartments offer views of the surrounding mountain peaks. The complex has a garage, a ski room and a Finnish sauna.

All this allows a quick and optimal return on investment in real estate, through one of the purchase models of residential units, along with numerous daily amenities that customers can enjoy.





FIELD APARTMENTS

APARTMENTS

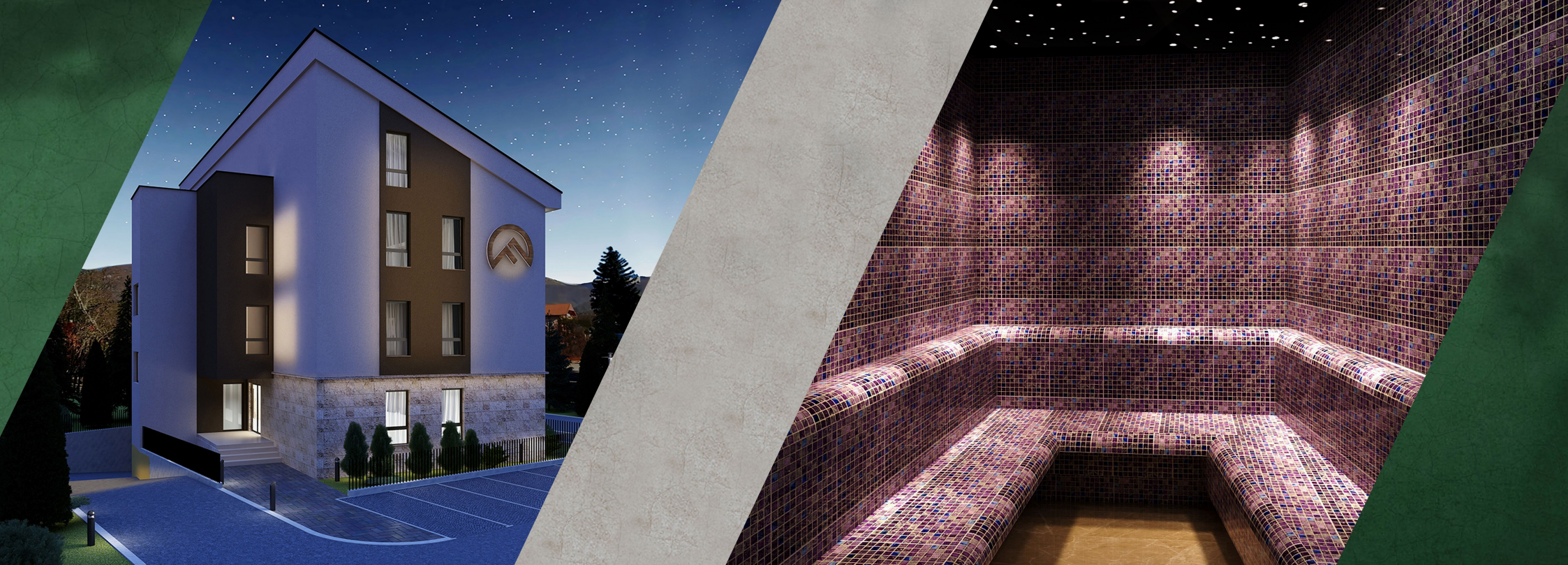
The total number of apartment units is 18, namely:

- 8 studio apartments of 27.80 m²
- 4 studio apartments of 27.80 m² + 15 m²
- 4 one-bedroom apartments of 40 m²
- 2 one-bedroom apartments of 40 m² + 20 m²

Total number of parking spaces: 18.

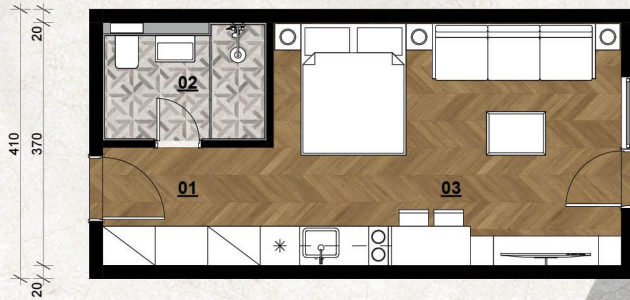
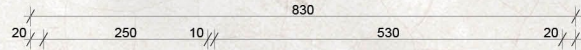
A garage with 9 parking spaces is provided within the building. 9 parking spaces are planned on the plot next to the building.





A

STUDIO APARTMENT



LEGEND

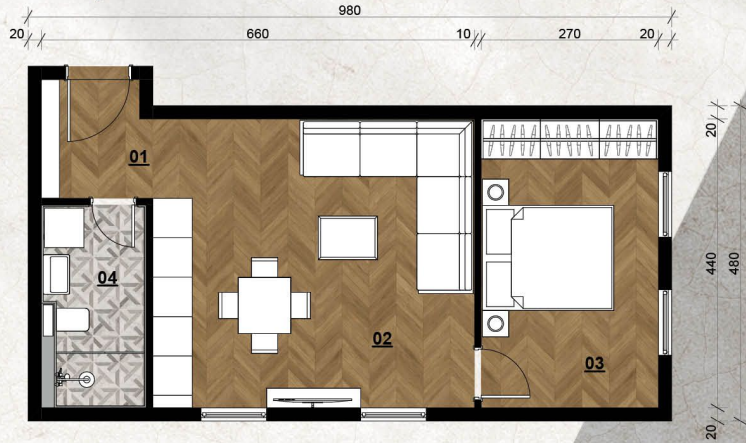
No	Name of the room	Area
<u>01</u>	Hallway	4.50 m ²
<u>02</u>	Bathroom	4.00 m ²
<u>03</u>	Living room and kitchen	19.30 m ²
Total:		27.80 m²





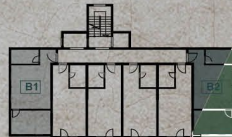
B

B ONE-BEDROOM APARTMENT



LEGEND

No	Name of the room	Area
<u>01</u>	Hallway	3.60 m ²
<u>02</u>	Bathroom	4.30 m ²
<u>03</u>	Living room and kitchen	20.50 m ²
<u>04</u>	Bedroom	11.60 m ²
Total:		40.00 m²





-1

LEGEND

No	Name	Area
<u>01</u>	Parking	208.50 m ²
<u>02</u>	SPA&Wellness	26.20 m ²
<u>03</u>	Ski room	11.40 m ²
<u>04</u>	Technical room	37.15 m ²
Total:		283.20 m²



Center Kolašin

Field Apartments

Ski center "Kolašin 1450/1600-Bjelasica"

